



PRESIDIUM[®]

PRIM II Software (Windows)

Installation Guide



Table of Contents

1. Installing PRIM II Software	2
--------------------------------------	---

1. Installing PRIM II Software

Step 1: Click on the setup.exe file to open the setup wizard for the installation.



Figure 1

Step 2: Click “Next” to continue with the installation process.

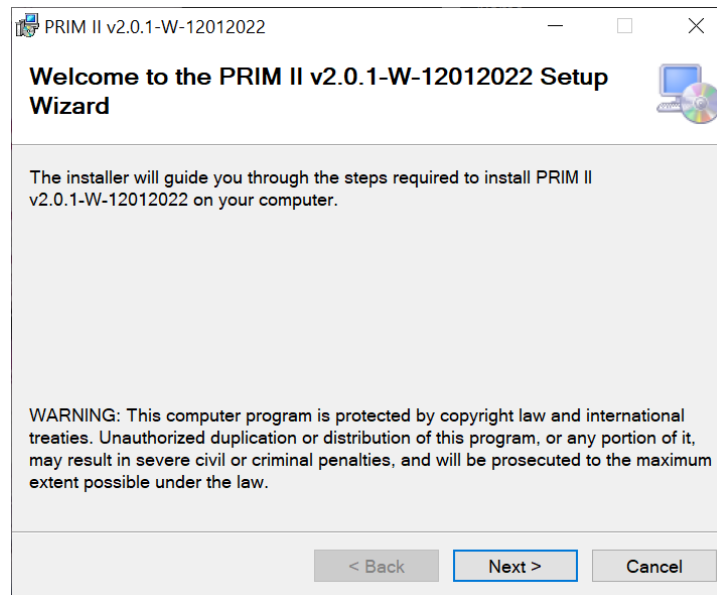


Figure 2

Step 3: Please take a look at the license agreement and click “I Agree” to accept the terms stated.

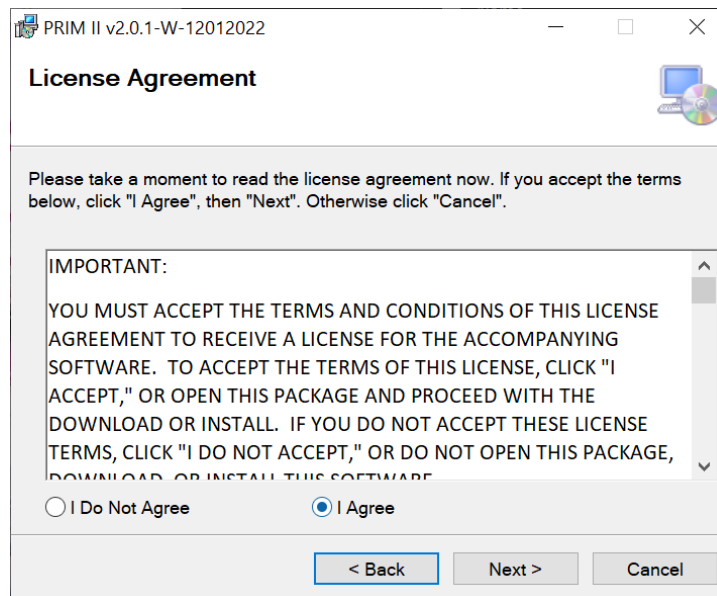


Figure 3

Step 4: Select the location where the software is to be installed. You may choose to use the default location or browse for the location you prefer.

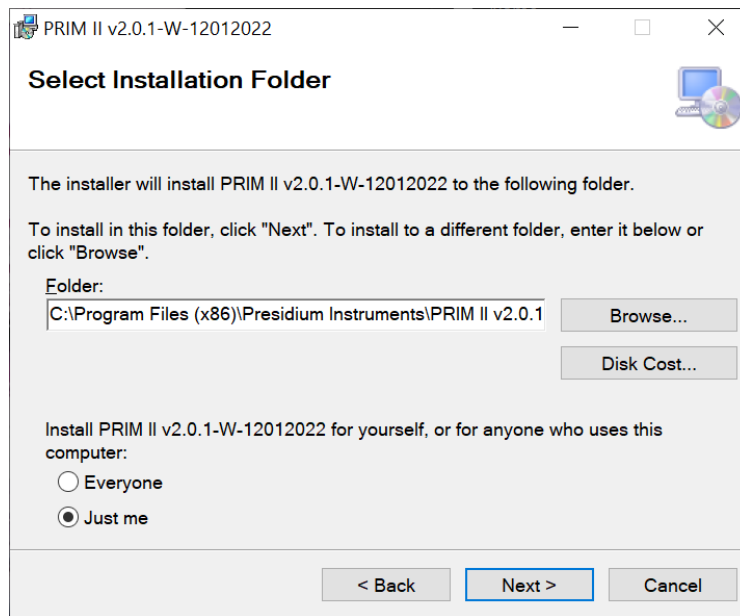


Figure 4

Step 5: Once the above steps are completed, click “Next” to confirm the installation.

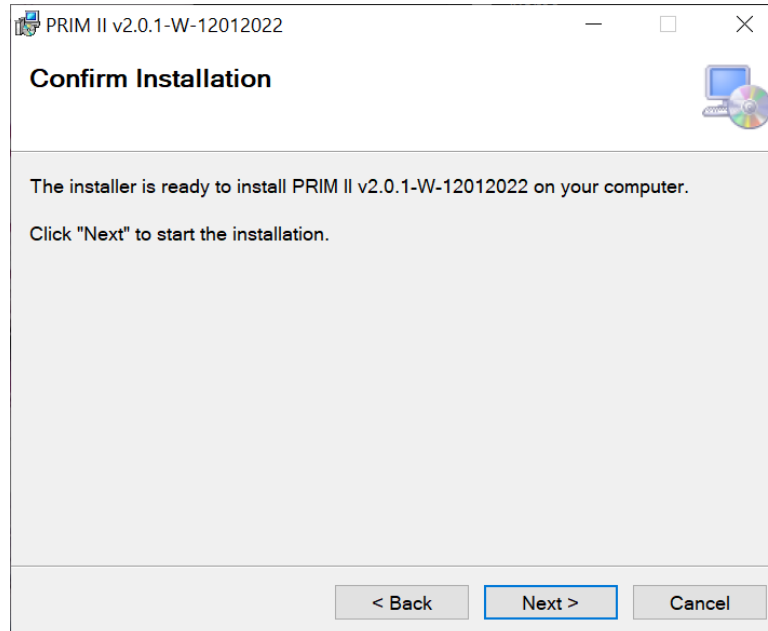


Figure 5

Step 6: Please wait for the software to finish installing.

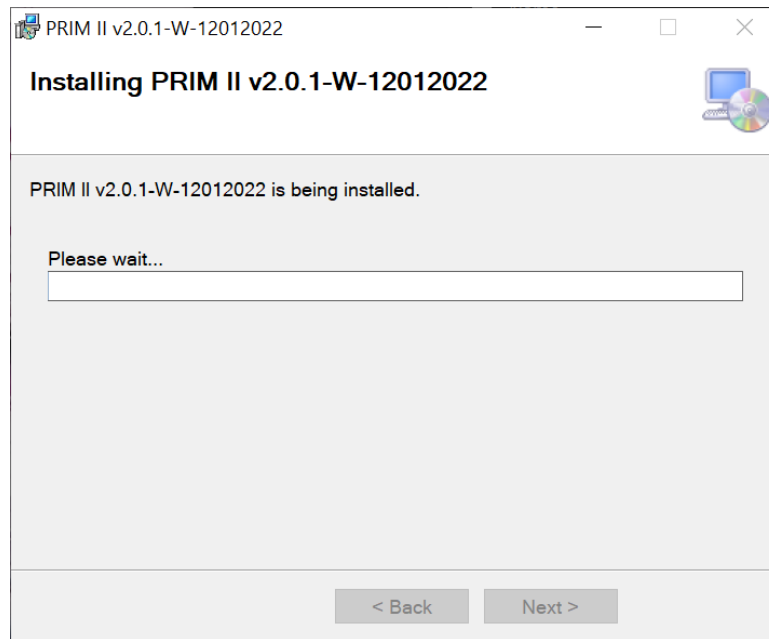


Figure 6

Step 7: Exit the setup wizard once the software has been installed successfully.

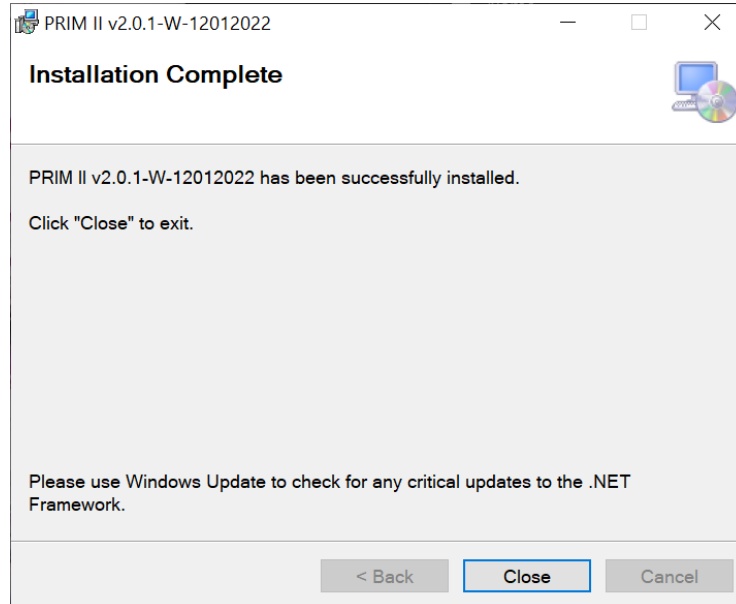


Figure 7

Step 8: The PRIM II startup icon will appear on the desktop after installing. Double click on the icon to start using the PRIM II Software.



Figure 8

End of Document